

# Print in CIP-POOL (blue tower)

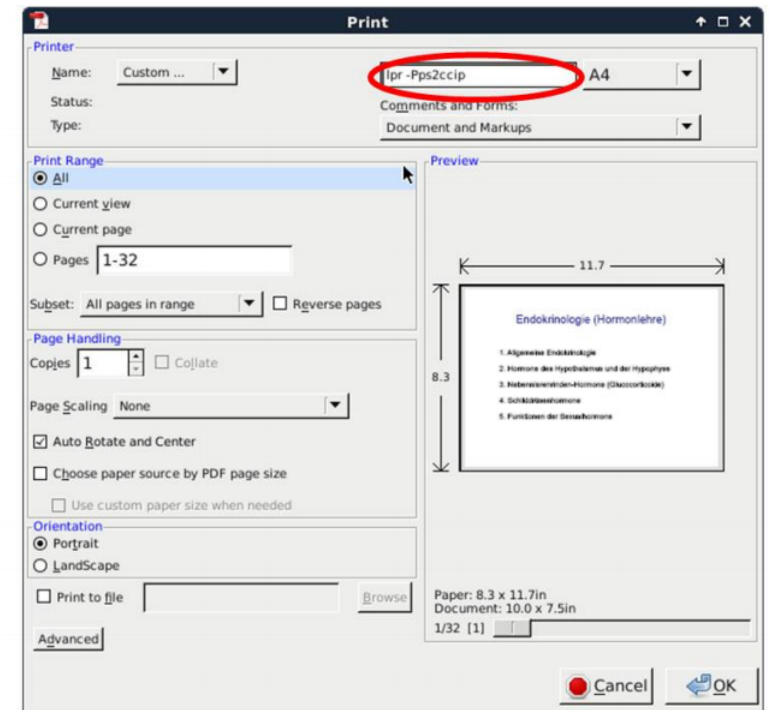
The easiest way to print in the Cip-Pools is with Adobe Reader.

You have many options, whether you want print colored or black and white or double-sided, and different printer names:

<b>lpr</b>	<b>-P</b>	<b>ps</b>	<b>2</b>	<b>c</b>	<b>cip</b>	<b>bw</b>	<b>d</b>
print			Stockwerk	Nummer		schwarz/weiß	duplex
Druckername							

Here it is important to insert a space before "-P". Likewise, you have to pay attention, to choose first the color and then the option for one-sided or double-sided. Each printer has a different default. Take this into account!

For example, the standard setting for the printer in the room 02.151-113, colorful and one-sided, is "lpr -Pps2ccip".



In case of problems or questions, please send an email to:

problems@cip.cs.fau.de